

ROUND 1 EROAD AUSTRALIAN RALLY CHAMPIONSHIP



ACCENT BENCHTOPS RALLY QUEENSLAND



SPECTATOR GUIDE

GYMPIE, QUEENSLAND

17-19 APRIL 2026

RALLYQUEENSLAND.COM.AU



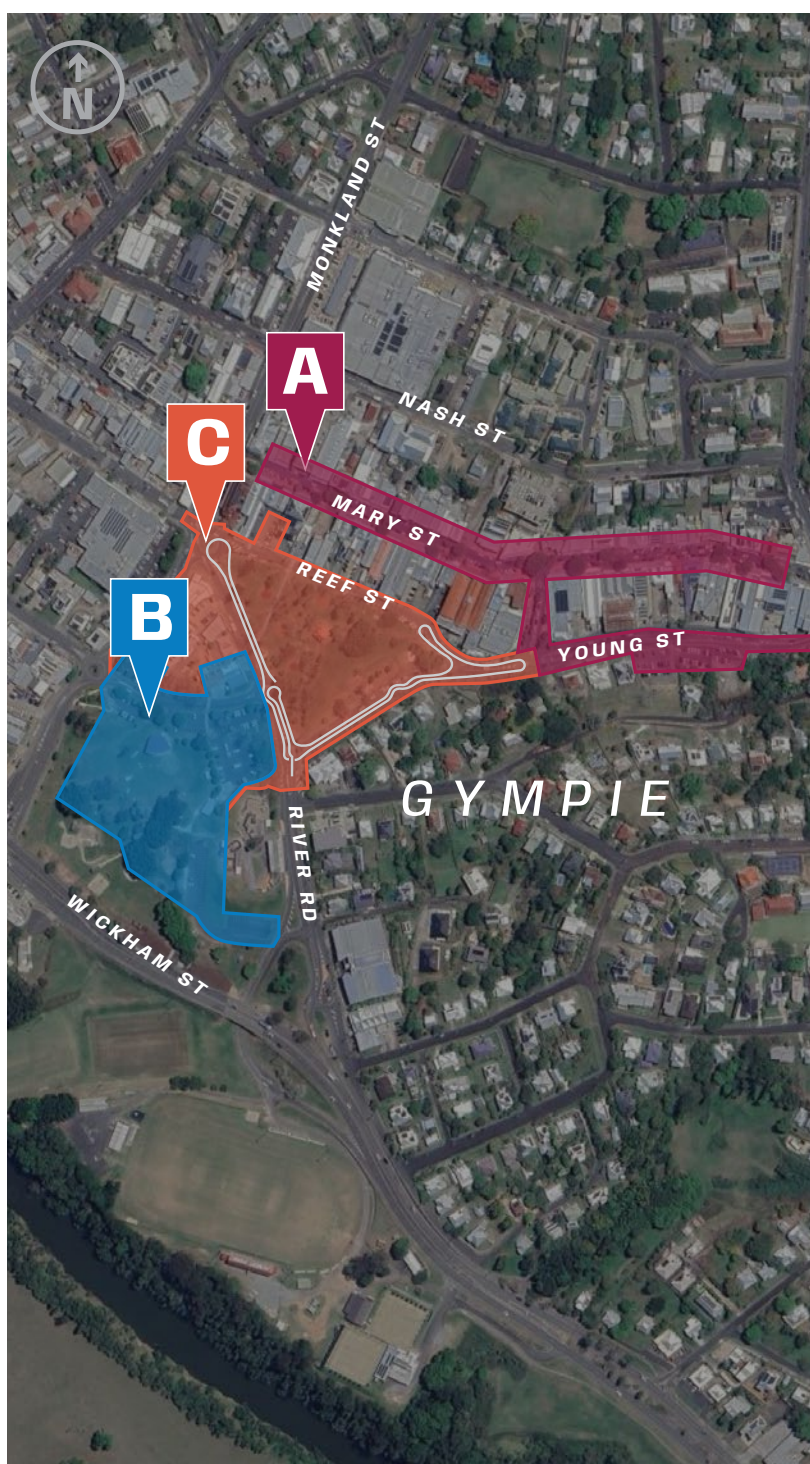
CHAMPIONSHIP SPONSORS



PRECINCT OVERVIEW

GYMPIE, QLD
17-19 APRIL 2026

Motorsport is Dangerous: Risk warning, disclaimer and idemnity
Motorsport Activities are inherently dangerous recreational activities and there is significant risk of injury, disability or death.
If you do not wish to be exposed to such risks, then you should not participate in the Motorsport Activities.



A

VELMEC AUTOMOTIVE WHEELS ON MARY

MARY STREET & YOUNG ST, GYMPIE

FRIDAY	5:00pm	Event starts
	5:30pm	1st rally car arrives
	6:00pm	Autographs
	7:30pm	1st rally car departs
	9:00pm	Event closes

SATURDAY	All day	Car displays and food and drinks
	10:00am	Street Machine & Classic Car Parade
	6:00pm	Street Machine & Classic Car Cruise

B

TELSTRA SERVICE PARK AT Galvanize Insurance RALLY CENTRAL

NELSON RESERVE, JAYCEE WAY, GYMPIE

FRIDAY	9:00am	Village open
---------------	--------	--------------

SATURDAY	6:00am	Village open
	8:50am	1st rally car departs

SUNDAY	6:00am	Village open
	7:30am	1st rally car departs
	2:00pm	QRC Podium
	4:30pm	ARC Podium

C

CAMPBELLS SUPER SPECIAL STAGE

MEMORIAL PARK, CBD GYMPIE

SATURDAY	8:00am	Precinct open
	8:00-11:30am	Street Sprints & drift demos
	12:00pm	SSS Event open
	12:37pm	Loop 1 - 1st rally car on stage
	2:00-5:00pm	Street Sprints & drift demos
	6:00pm	Loop 2 - 1st rally car on stage
	8:30pm	Fink Street Invitational demo

SUNDAY	8:00am	Precinct open
	8:00-9:30am	Street Sprints & drift demos
	10:00am	SSS Event open
	10:46am	Loop 1 - 1st rally car on stage



PARK & RIDE FROM LAKE ALFORD & ONE MILE OVALS

SATURDAY OVERVIEW

GYMPIE, QLD
18 APRIL 2026

Motorsport is Dangerous: Risk warning, disclaimer and idemnity
Motorsport Activities are inherently dangerous recreational activities and there is significant risk of injury, disability or death.
If you do not wish to be exposed to such risks, then you should not participate in the Motorsport Activities.



A

VELMEC AUTOMOTIVE WHEELS ON MARY

MARY STREET & YOUNG ST, GYMPIE

SATURDAY	All day	Car displays and food and drinks
	10:00am	Street Machine & Classic Car Parade
	6:00pm	Street Machine & Classic Car Cruise

B

TELSTRA SERVICE PARK AT Galvaniize Insurance RALLY CENTRAL

NELSON RESERVE, JAYCEE WAY, GYMPIE

SATURDAY	6:00am	Village open
	8:50am	1st rally car departs

C

CAMPBELLS SUPER SPECIAL STAGE

MEMORIAL PARK, CBD GYMPIE

SATURDAY	8:00am	Precinct open
	8:00-11:30am	Street Sprints & drift demo
	12:00pm	SSS Event open
	12:37pm	Loop 1 - 1st rally car on stage
	2:00-5:00pm	Street Sprints & drift demo
	6:00pm	Loop 2 - 1st rally car on stage
	8:30pm	Fink Street Invitational demo

D

4TINT2U SPECTATOR POINT 1

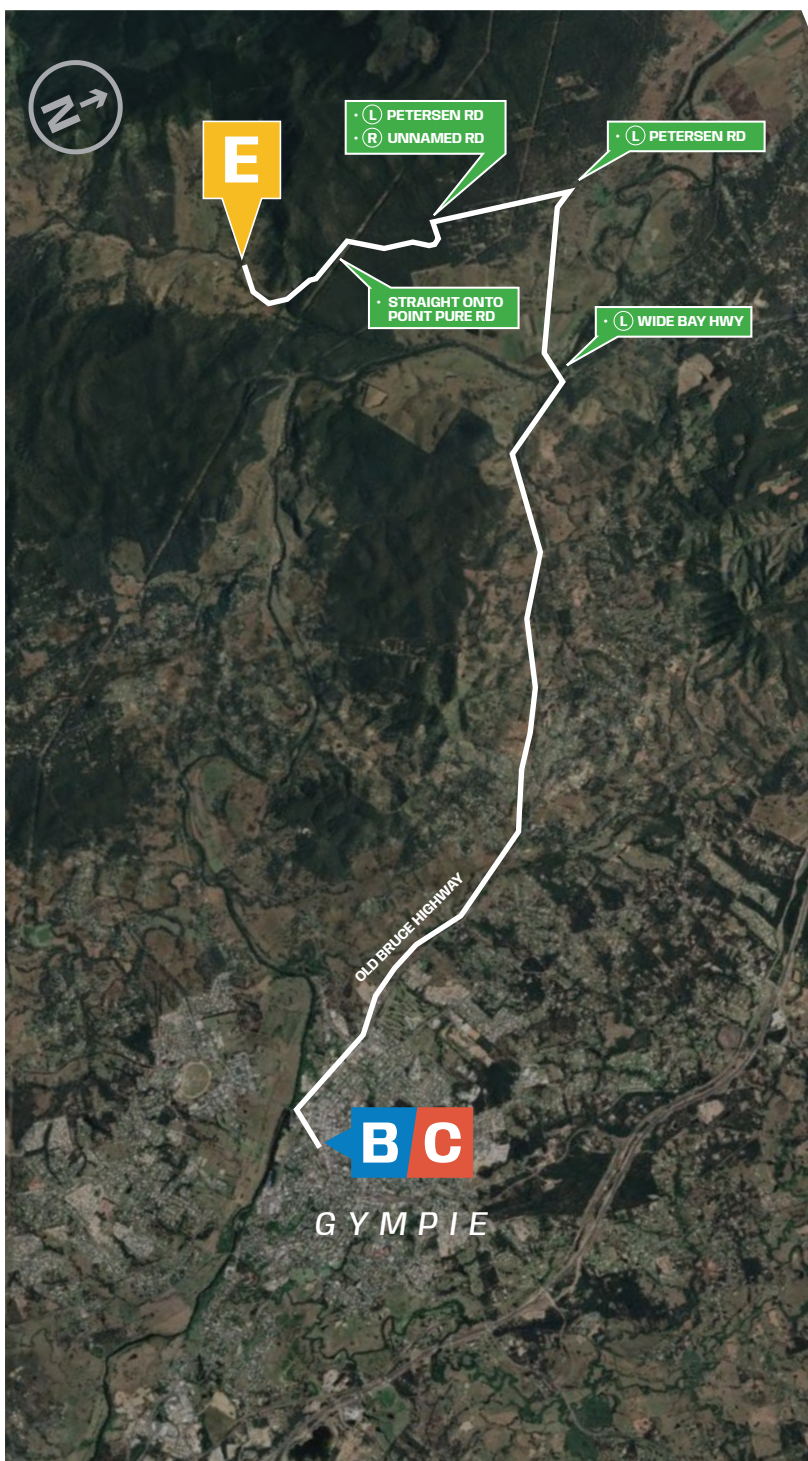
DERRIER ROAD, IMBIL

SATURDAY	9:00am	Spectator Point open
	9:50am	Loop 1 - 1st rally car on stage
	3:00pm	Loop 2 - 1st rally car on stage

SUNDAY OVERVIEW

GYMPIE, QLD
19 APRIL 2026

Motorsport is Dangerous: Risk warning, disclaimer and idemnity
Motorsport Activities are inherently dangerous recreational activities and there is significant risk of injury, disability or death.
If you do not wish to be exposed to such risks, then you should not participate in the Motorsport Activities.



B

TELSTRA SERVICE PARK AT Galvanize Insurance RALLY CENTRAL

NELSON RESERVE, JAYCEE WAY, GYMPIE

SUNDAY

6:00am Village open
7:30am 1st rally car departs
2:00pm QRC Podium
4:30pm ARC Podium

C

CAMPBELLS SUPER SPECIAL STAGE

MEMORIAL PARK, CBD GYMPIE

SUNDAY

8:00am Precinct open
8:00-9:30am Street Sprints & drift demo
10:00am SSS Event open
10:46am Loop 1 - 1st rally car on stage

E

CAMPBELLS CORNER SPECTATOR POINT 2

PETERSON ROAD, BELLS BRIDGE

SUNDAY

8:30am Spectator Point open
9:28am Loop 1 - 1st rally car on stage
1:51pm Loop 2 - 1st rally car on stage



Accent Benchtops Rally Queensland would like to thank its generous 2026 event partners

HOST REGION & KEY PARTNER



EVENT NAMING RIGHTS SPONSOR



SUPER SPECIAL STAGE NAMING RIGHTS SPONSOR



MAJOR SPONSORS

FEATURE SPONSORS



SUPPORTER PARTNERS



COMMUNITY PARTNERS



DELIVERY PARTNERS



TELSTRA SERVICE PARK AT Galvanize Insurance RALLY CENTRAL

FRIDAY **SATURDAY** **SUNDAY** 17-19 APRIL 2026



LOCATION

Nelson Reserve, Jaysce Way, CBD Gympie

No parking on Reef St, River Rd and Young St.

Park & Ride from Lake Alford & One Mile Ovals

[Google Maps location](#)

[Register for free tickets here](#)

TIMING

FRIDAY

9:00am Village open

SATURDAY

6:00am Village open

8:50am 1st rally car departs

SUNDAY

6:00am Village open

7:30am 1st rally car departs

2:00pm QRC Podium

4:30pm ARC Podium

- EVENT AREA
- FAN ZONE
INCLUDES DJ, PODIUM, SEATING
- FOOD AND DRINKS
- VIP AREA
- TOILETS
- PARKING
- ARC/QRC SERVICE BAYS
- ROAD CLOSED



Where Quality Meets Craftsmanship

At Accent Benchtops, we specialise in crafting high-quality stone benchtops for residential and commercial spaces. With precision workmanship and premium materials, we deliver durable, stylish surfaces that elevate kitchens, bathrooms, and workspaces. Whether it's a custom project or large-scale fit-out, our team brings attention to detail, fast turnaround times, and a commitment to excellence. Built to Last. Designed to Accent.



t. 07 5513 1177
e. info@accentbenchtops.com
w. accentbenchtops.com



Fully Accredited
Stone Mason



Wide Selection of
Approved to Use
Materials

VELMEC AUTOMOTIVE WHEELS ON MARY

FRIDAY **SATURDAY** 17-18 APRIL 2026



LOCATION

Mary Street, Gympie

This is the main street of Gympie.

No parking on Reef St, River Rd and Young St.

Park & Ride from Lake Alford & One Mile Ovals

[Google Maps location](#)

[Register for free tickets here](#)

TIMING

FRIDAY

- 5:00pm** Event starts
- 5:30pm** 1st rally car arrives
- 6:00pm** Autographs
- 7:30pm** 1st rally car departs
- 9:00pm** Event closes

SATURDAY

- All day** Car displays and food and drinks
- 10:00am** Street Machine & Classic Car Parade
- 6:00pm** Street Machine & Classic Car Cruise

- CAR SHOW AREA
- CARS ON DISPLAY
- RALLY CAR ENTRY
- RALLY CAR EXIT
- VIP AREA
- TOILETS
- PARKING

CAMPBELLS SUPER SPECIAL STAGE

SATURDAY **SUNDAY** 18-19 APRIL 2026



LOCATION

Memorial Park, CBD Gympie

No parking on Reef St, River Rd and Young St.

Park & Ride from Lake Alford & One Mile Ovals

RALLY STAGE

Competitors complete 2 laps of the Campbells Super Special Stage.

Spectators are to stay behind safety barriers at all times.

TIMING

SATURDAY

- 8:00am** Precinct open
- 8 - 11:30am** Street Sprints & drift demos
- 12:00pm** SSS Event open
- 12:37pm** Loop 1 - 1st rally car on stage
- 2 - 5pm** Street Sprints & drift demos
- 6:00pm** Loop 2 - 1st rally car on stage
- 8.30pm** Fink Street Invitational demo

SUNDAY

- 8:00am** Precinct open
- 8 - 9:30am** Street Sprints & drift demos
- 10:00am** SSS Event open
- 10:46am** Loop 1 - 1st rally car on stage

- RALLY STAGE
- EVENT AREA
- STREET MACHINES & CLASSIC CARS
- CARS ON DISPLAY
- VIP AREA
- CONTROLLED CROSSING
- TOILETS
- BAR
- ROAD CLOSED

[Google Maps location](#)

[Register for free tickets here](#)

DISCOVER THE GYMPIE REGION

Where Heritage, Hinterland and Coast Meet.
One Region, Endless Ways to Explore.

Explore the historic heart of Gympie, uncover charming country townships and experience the rolling landscapes and paddock-to-plate food experiences of the Mary Valley. Follow the journey to Rainbow Beach, the southern gateway to K'gari (formerly Fraser Island) for coastal adventure and natural beauty. With real experiences and endless ways to explore, it's a destination worth staying longer for.



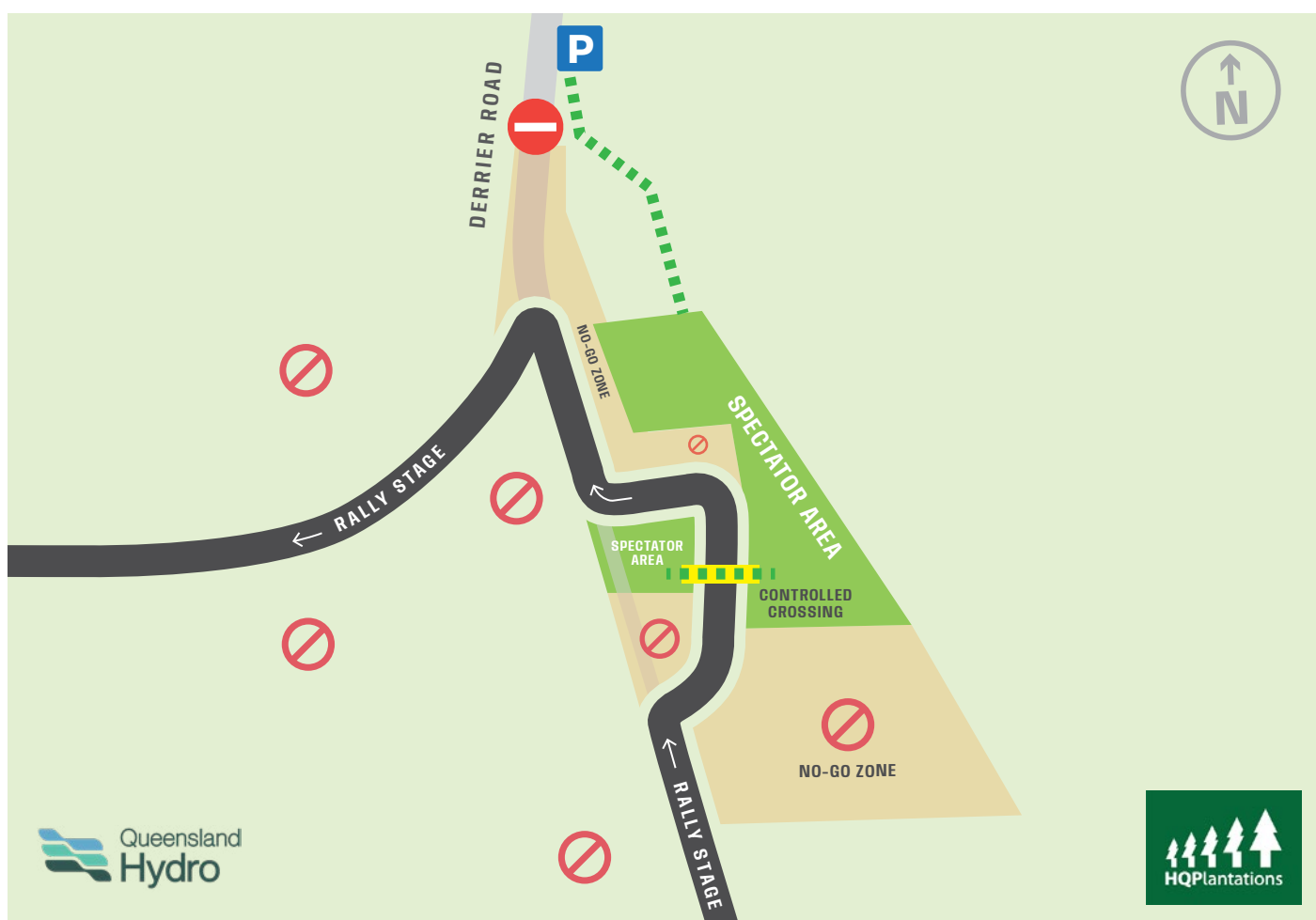
Visit
**Gympie
Region**



visitgympieregion.com.au

4TINT2U SPECTATOR POINT 1

SATURDAY 18 APRIL 2026



LOCATION

Derrier Road, Imbil

Access via Yabba Creek Road.

Google Maps location

GPS: 26° 29' 54.942"S 152° 37' 36.516"E

Register for free tickets here

TIMING

- 9:00am** Spectator Point open
- 9:50am** Loop 1 - 1st rally car on stage
- 3:00pm** Loop 2 - 1st rally car on stage

PARKING

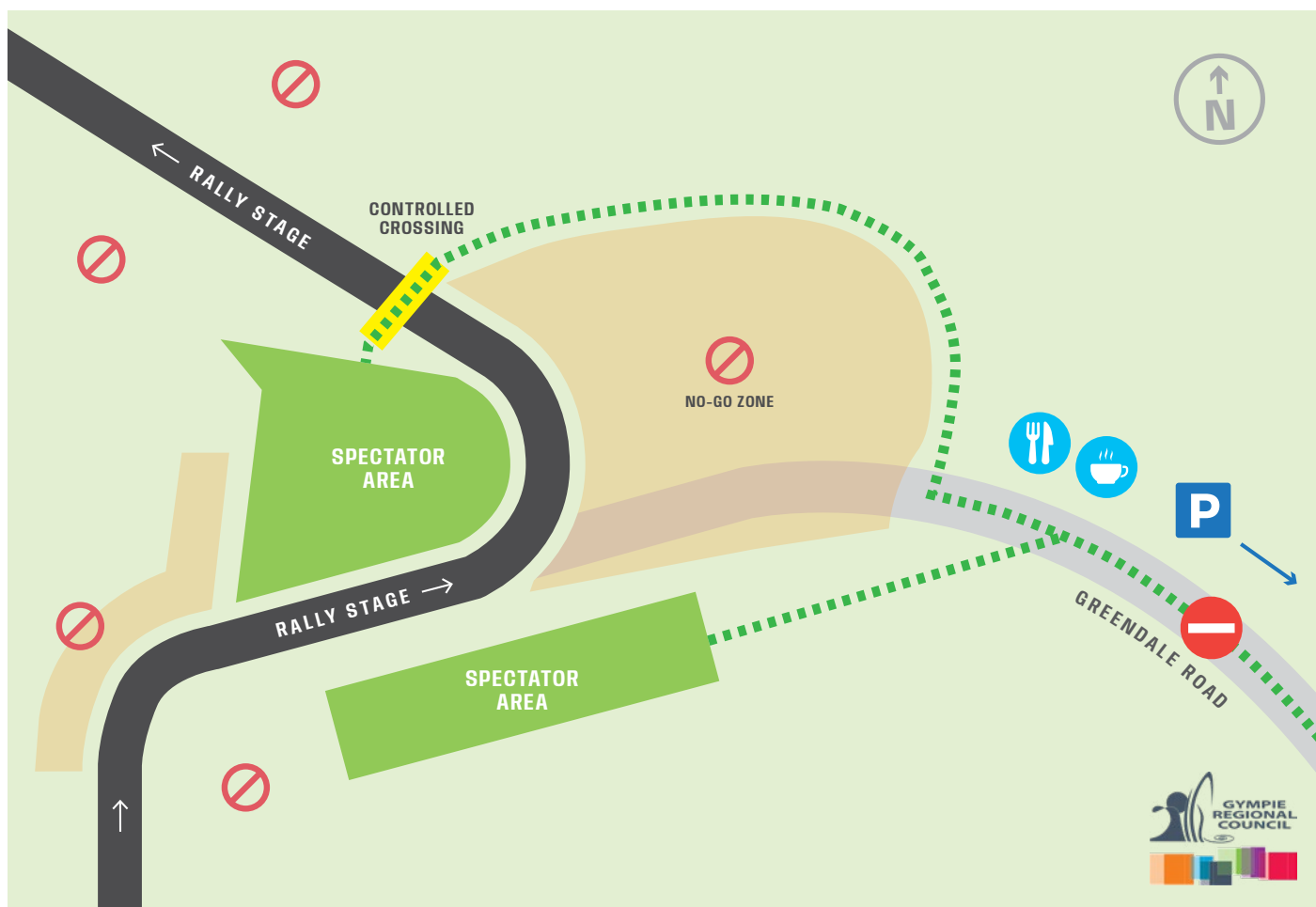
Parking available along the side of Derrier Road.

Please be courteous and do not block other vehicles when parking. Do not park in local resident's driveways.

- RALLY STAGE
- SPECTATOR AREA
- SPECTATOR PATHWAY
- CONTROLLED CROSSING
- PARKING
- NO-GO AREA
- ROAD CLOSED

CAMPBELLS CORNER SPECTATOR POINT 2

SUNDAY 19 APRIL 2026



LOCATION

Cnr Greendale Rd and Paff Rd,
Brooyar State Forest

Access to point must be via Wide
Bay Highway and Petersen Rd.

For directions, refer to
Sunday Map on Page 4

Register for free tickets here

TIMING

8:30am Spectator Point open
9:28am Loop 1 - 1st rally car on stage
1:51pm Loop 2 - 1st rally car on stage

PARKING

Parking available in designated area on
Greendale Road. Located just before
road closure.

Please be courteous and do not block other
vehicles when parking. Do not park in local
resident's driveways.

- RALLY STAGE
- SPECTATOR AREA
- SPECTATOR PATHWAY
- CONTROLLED CROSSING
- PARKING
- FOOD AND DRINKS
- NO-GO AREA
- ROAD CLOSED